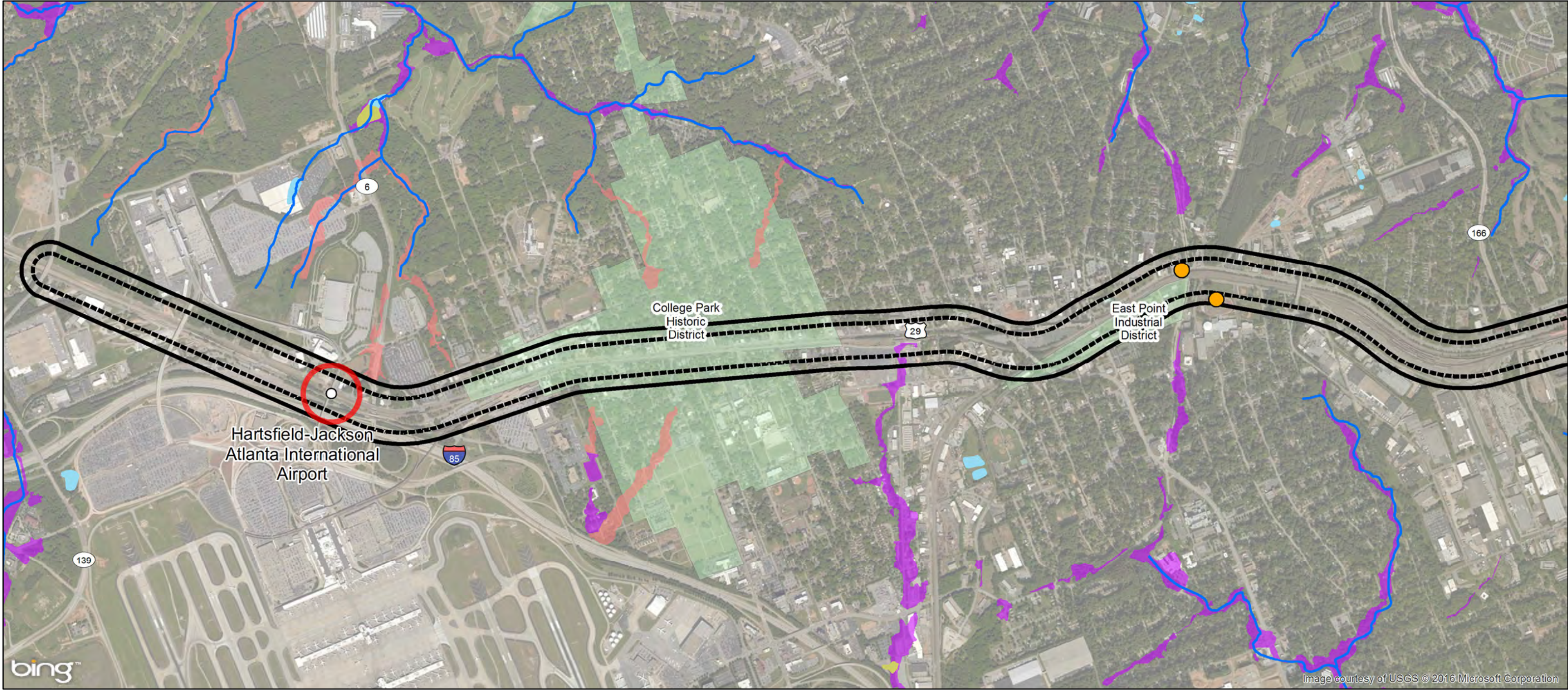
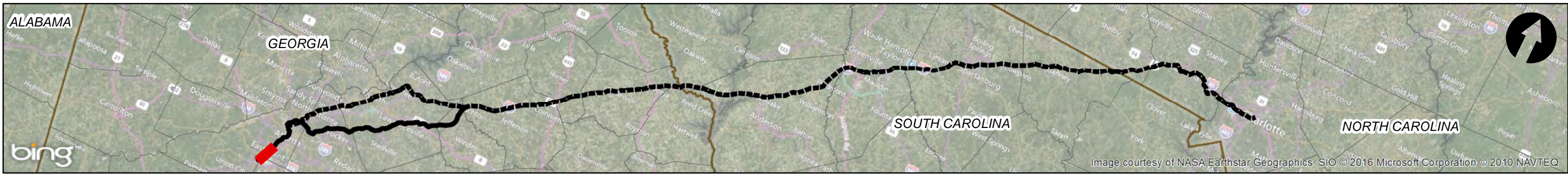


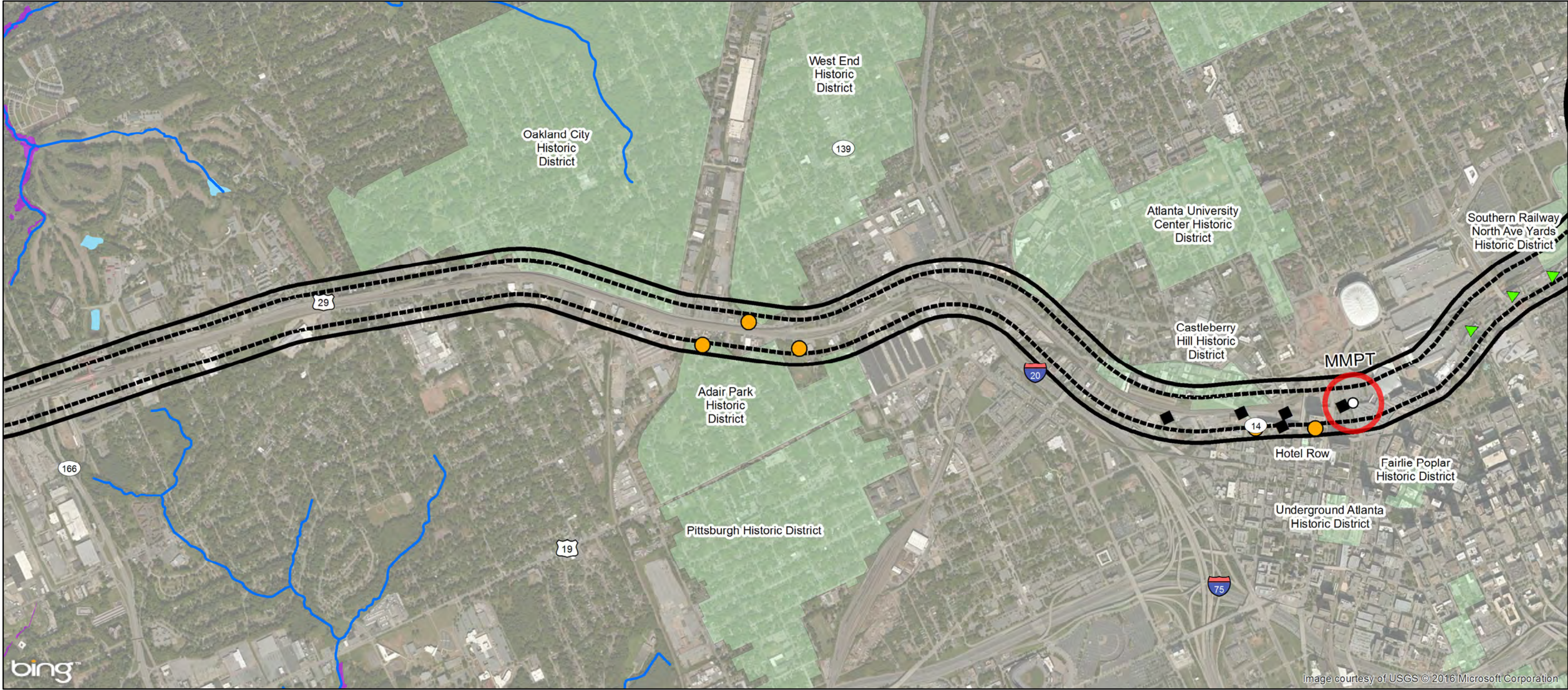
I-85 CORRIDOR ALTERNATIVE CSX APPROACH
ONLY



Legend

I-85 1000 ft Cultural Resources Environmental Screening Area	Waters	FEMA 100-Year Floodplain	Historic Resource / Boundary	State/Local NRHP Eligible District
I-85 600 ft Ecology Environmental Screening Area	NHD River / Stream	Zone A	State/Local NRHP Eligible	NRHP Listed District
Proposed Station	NWI Wetlands	Zone AE	NRHP Listed	
	NWI Open Waters		Park	

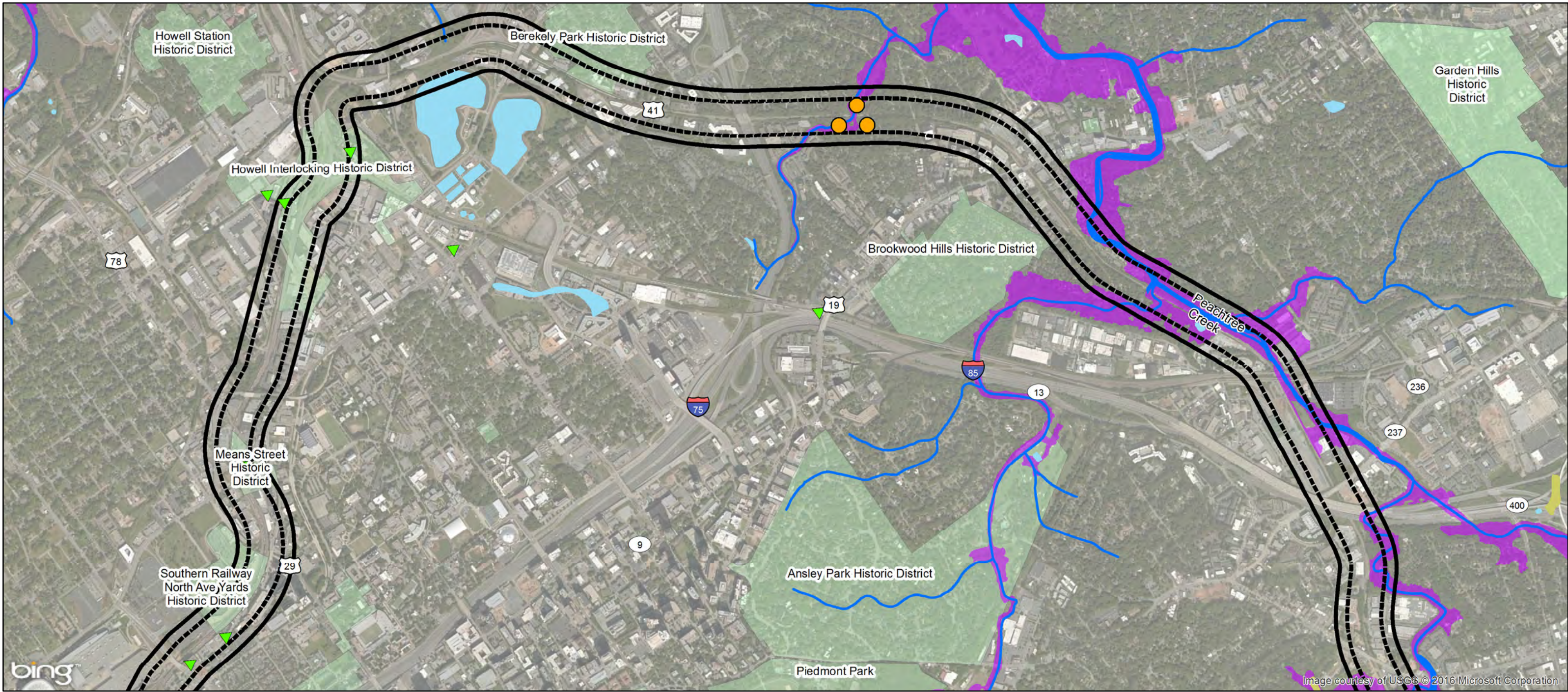
0 0.25 0.5 Miles



Legend

I-85 1000 ft Cultural Resources Environmental Screening Area	Waters	FEMA 100-Year Floodplain	Historic Resource / Boundary	State/Local NRHP Eligible District
I-85 600 ft Ecology Environmental Screening Area	NHD River / Stream	Zone A	State/Local NRHP Eligible	NRHP Listed District
Proposed Station	NWI Wetlands	Zone AE	NRHP Listed	
	NWI Open Waters		Park	

0 0.25 0.5 Miles



Legend

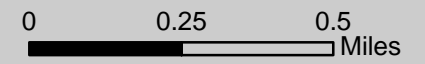
- I-85 1000 ft Cultural Resources Environmental Screening Area
- I-85 600 ft Ecology Environmental Screening Area
- Proposed Station

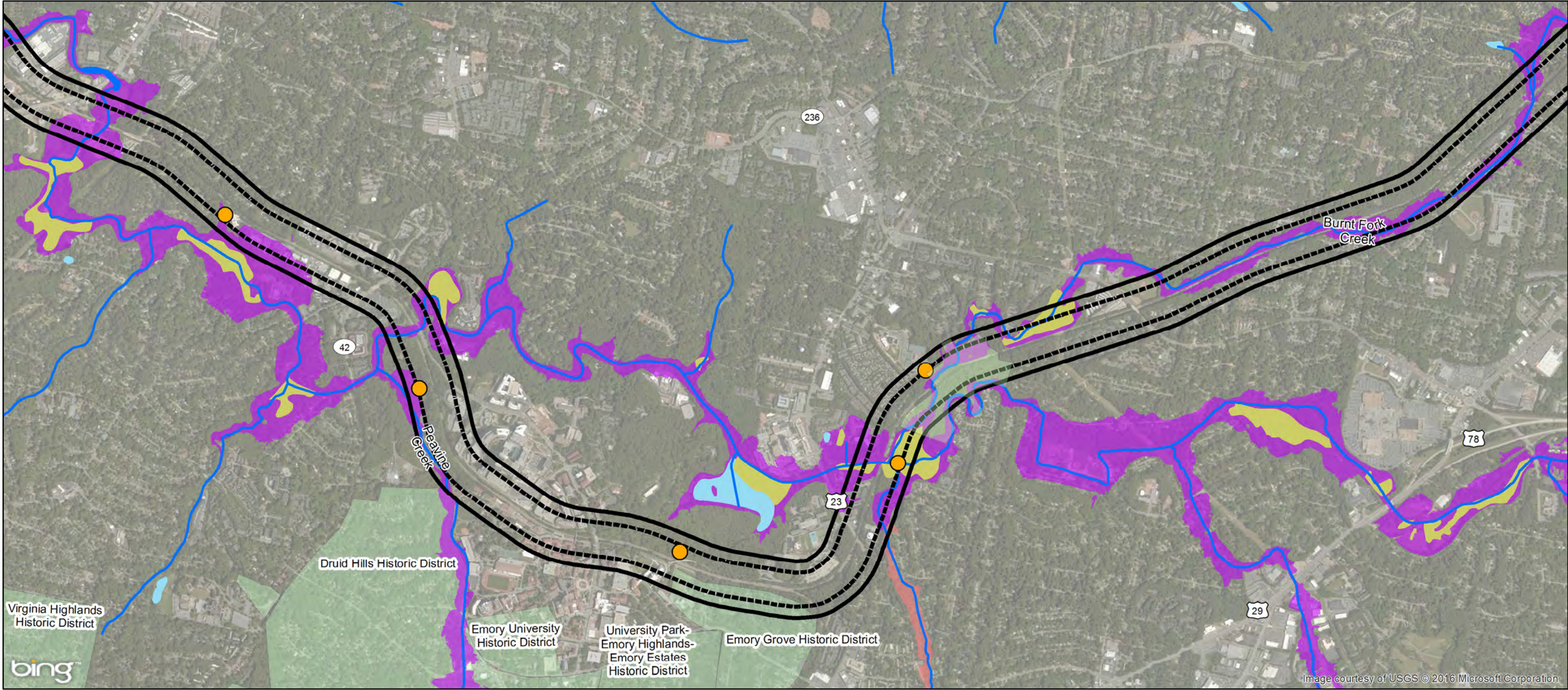
- Waters**
- NHD River / Stream
 - NWI Wetlands
 - NWI Open Waters

- FEMA 100-Year Floodplain**
- Zone A
 - Zone AE

- Historic Resource / Boundary**
- State/Local NRHP Eligible
 - NRHP Listed
 - Park

- State/Local NRHP Eligible District
- NRHP Listed District

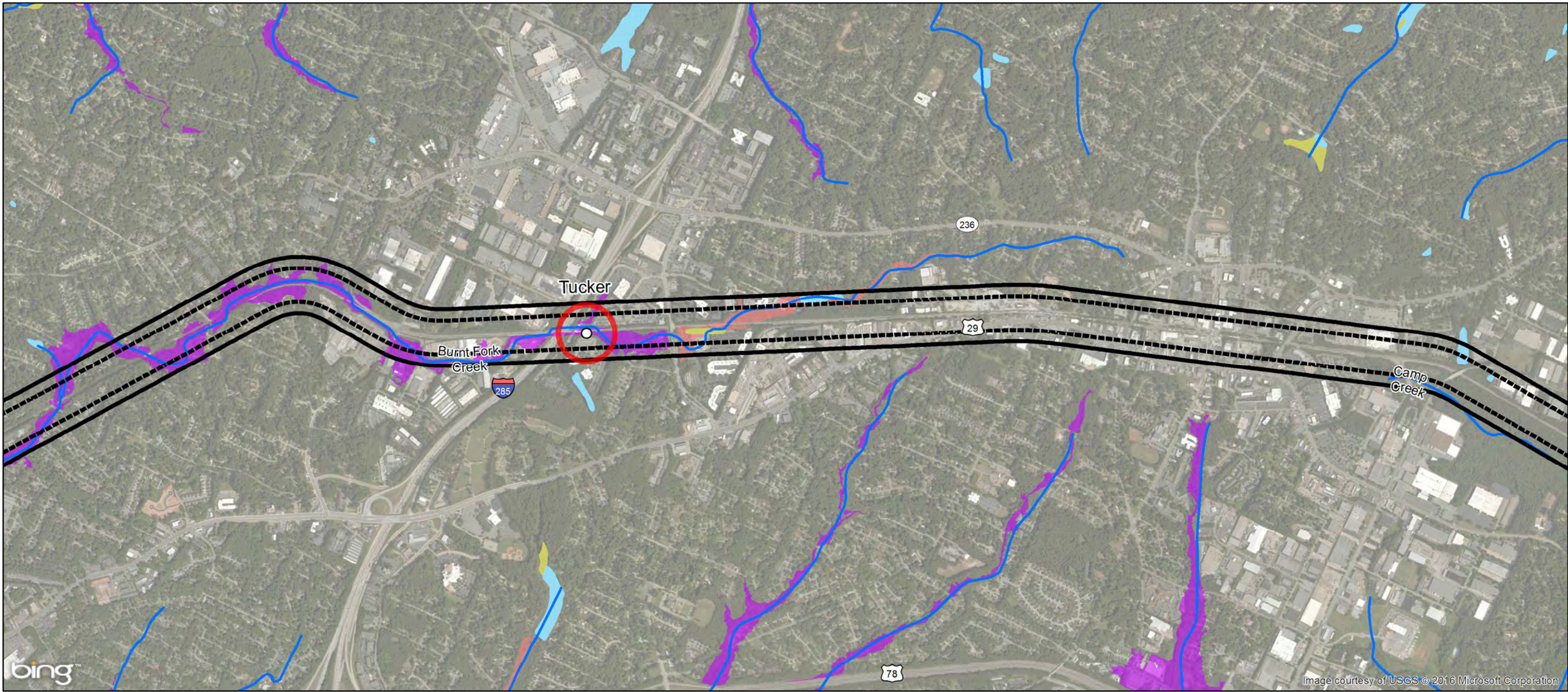




Legend

I-85 1000 ft Cultural Resources Environmental Screening Area	Waters	FEMA 100-Year Floodplain	Historic Resource / Boundary	State/Local NRHP Eligible District
I-85 600 ft Ecology Environmental Screening Area	NHD River / Stream	Zone A	State/Local NRHP Eligible	NRHP Listed District
Proposed Station	NWI Wetlands	Zone AE	NRHP Listed	
	NWI Open Waters		Park	

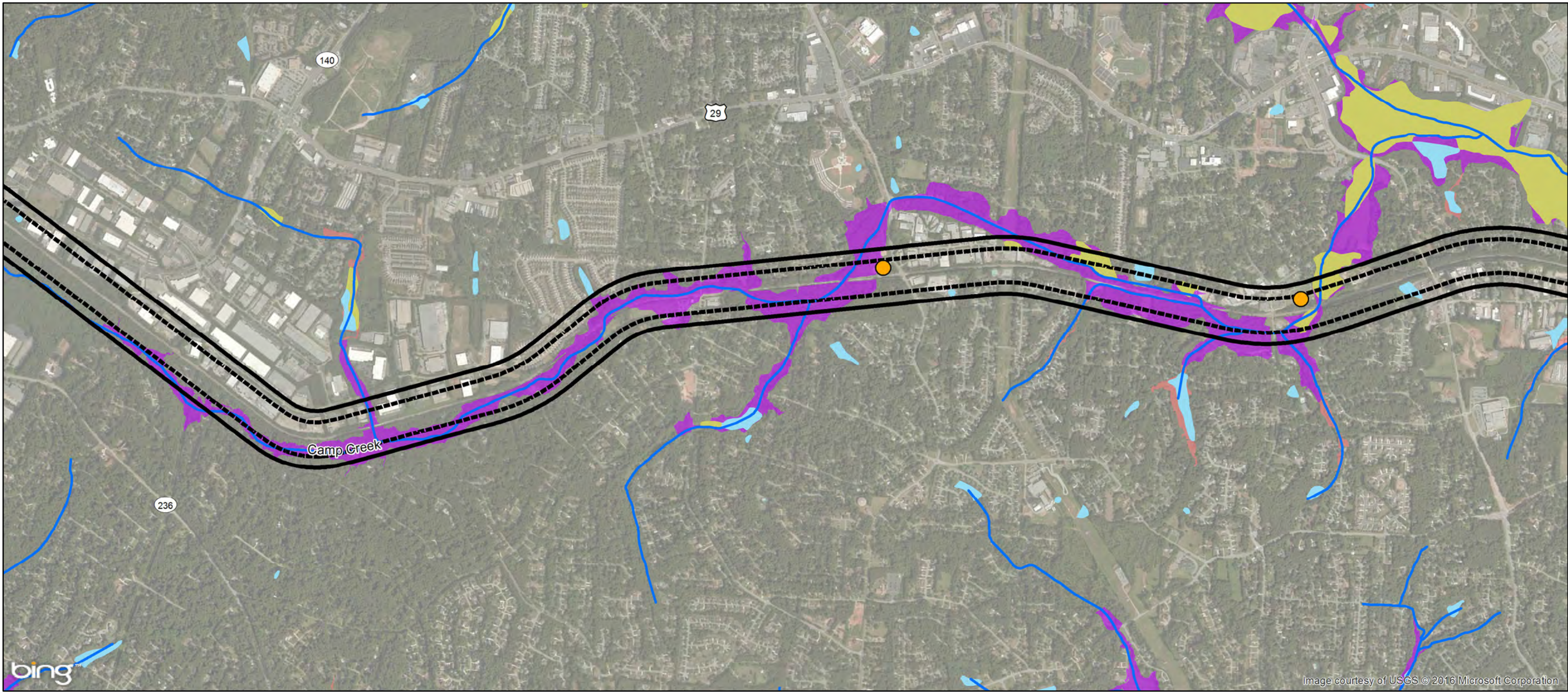
0 0.25 0.5 Miles



Legend

I-85 1000 ft Cultural Resources Environmental Screening Area	Waters	FEMA 100-Year Floodplain	Historic Resource / Boundary	State/Local NRHP Eligible District
I-85 600 ft Ecology Environmental Screening Area	NHD River / Stream	Zone A	State/Local NRHP Eligible	NRHP Listed District
Proposed Station	NWI Wetlands	Zone AE	NRHP Listed	
	NWI Open Waters		Park	

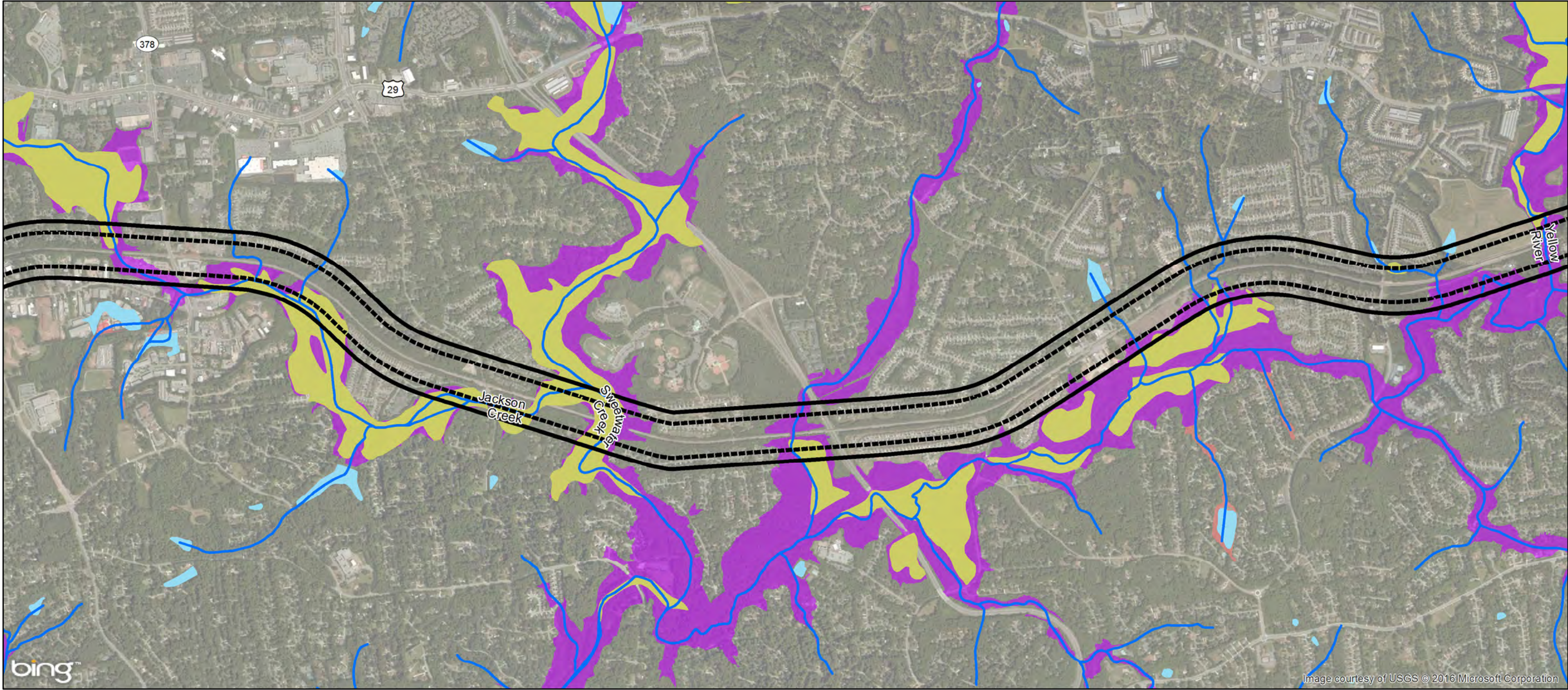
0 0.25 0.5
Miles



Legend

I-85 1000 ft Cultural Resources Environmental Screening Area	Waters	FEMA 100-Year Floodplain	Historic Resource / Boundary	State/Local NRHP Eligible District
I-85 600 ft Ecology Environmental Screening Area	NHD River / Stream	Zone A	State/Local NRHP Eligible	NRHP Listed District
Proposed Station	NWI Wetlands	Zone AE	NRHP Listed	
	NWI Open Waters		Park	

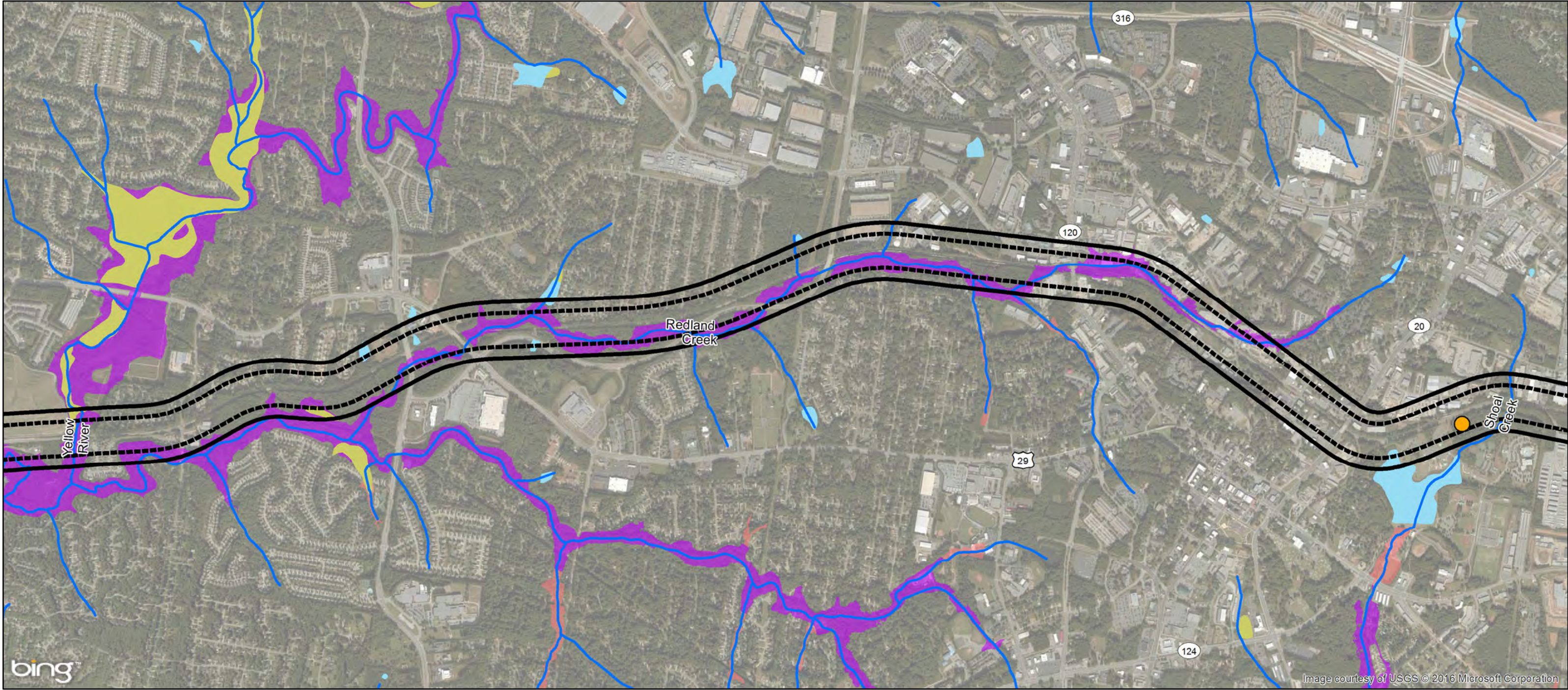
0 0.25 0.5
Miles



Legend

I-85 1000 ft Cultural Resources Environmental Screening Area	Waters	FEMA 100-Year Floodplain	Historic Resource / Boundary	State/Local NRHP Eligible District
I-85 600 ft Ecology Environmental Screening Area	NHD River / Stream	Zone A	State/Local NRHP Eligible	NRHP Listed District
Proposed Station	NWI Wetlands	Zone AE	NRHP Listed	
	NWI Open Waters		Park	

0 0.25 0.5
 Miles



Legend

- I-85 1000 ft Cultural Resources Environmental Screening Area
- I-85 600 ft Ecology Environmental Screening Area
- Proposed Station

Waters

- NHD River / Stream
- NWI Wetlands
- NWI Open Waters

FEMA 100-Year Floodplain

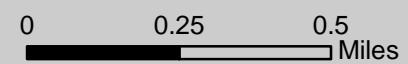
- Zone A
- Zone AE

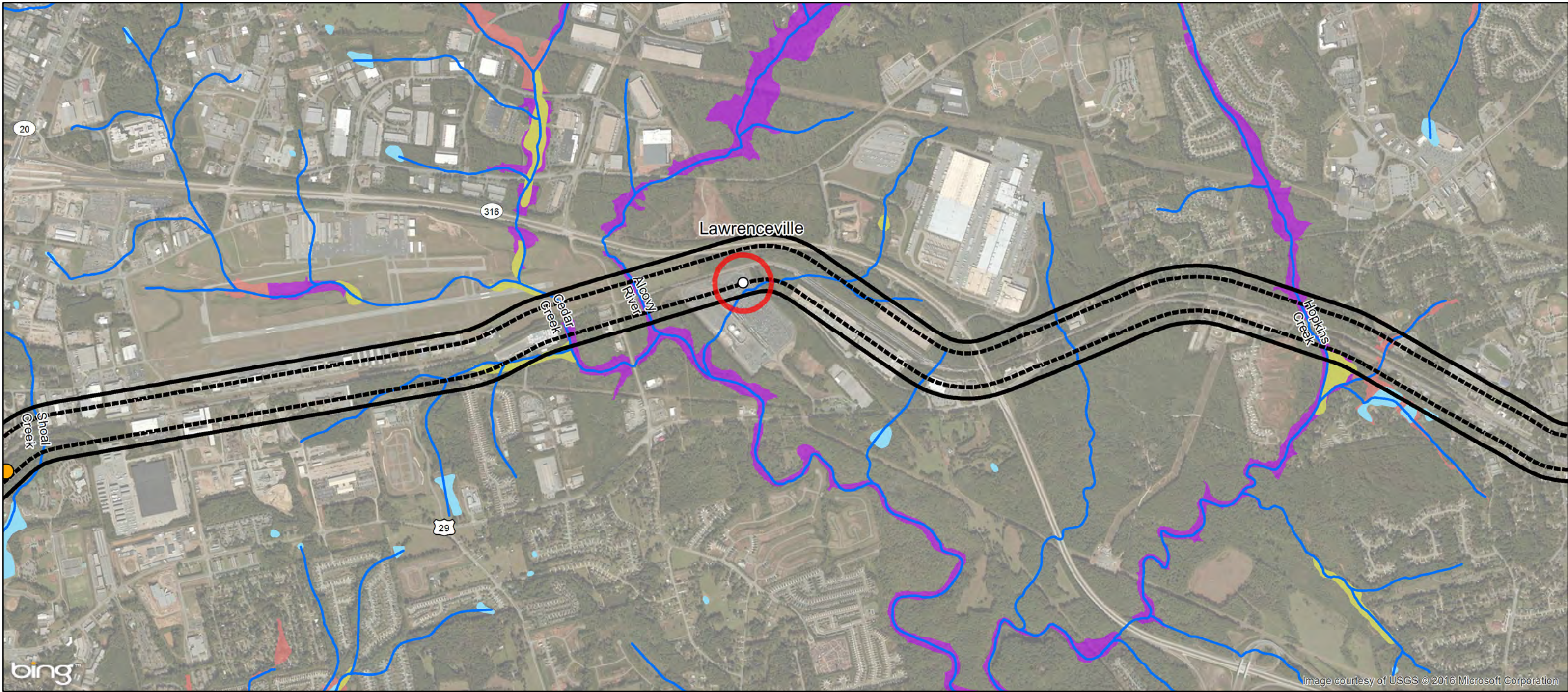
Historic Resource / Boundary

- State/Local NRHP Eligible
- NRHP Listed
- Park

State/Local NRHP Eligible District

- State/Local NRHP Eligible District
- NRHP Listed District

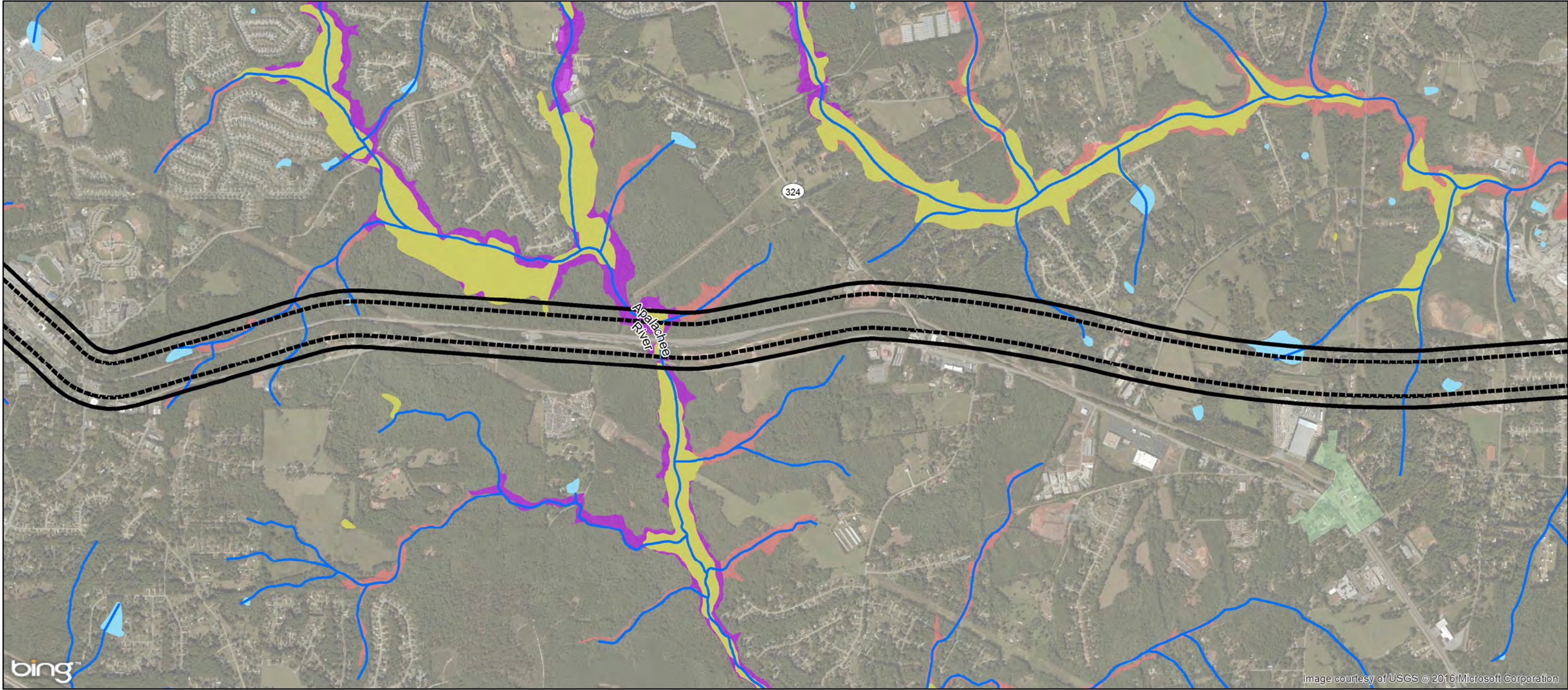




Legend

I-85 1000 ft Cultural Resources Environmental Screening Area	Waters	FEMA 100-Year Floodplain	Historic Resource / Boundary	State/Local NRHP Eligible District
I-85 600 ft Ecology Environmental Screening Area	NHD River / Stream	Zone A	State/Local NRHP Eligible	NRHP Listed District
Proposed Station	NWI Wetlands	Zone AE	NRHP Listed	
	NWI Open Waters		Park	

0 0.25 0.5 Miles



Legend

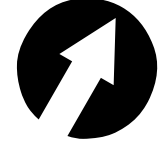
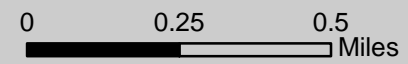
- I-85 1000 ft Cultural Resources Environmental Screening Area
- I-85 600 ft Ecology Environmental Screening Area
- Proposed Station

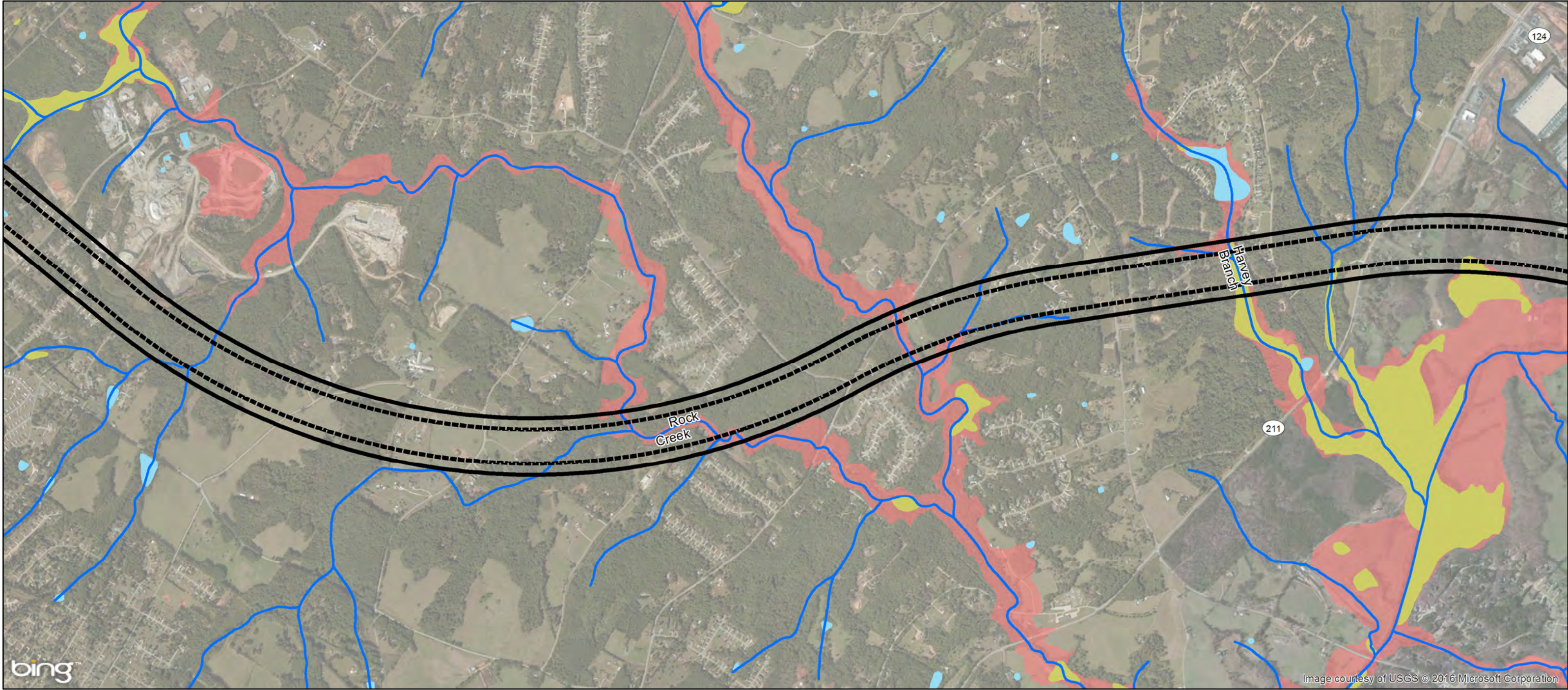
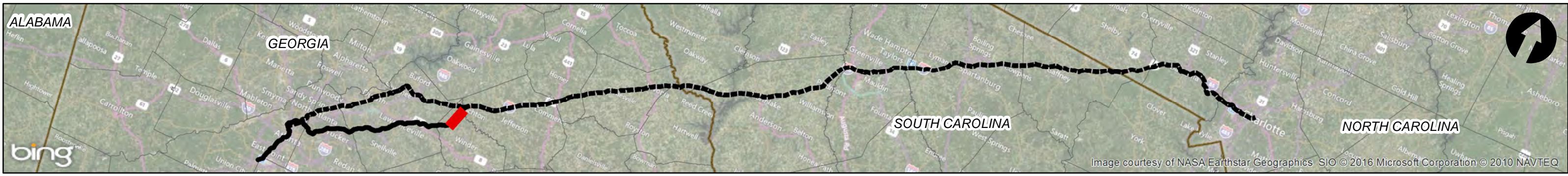
- Waters**
- NHD River / Stream
 - NWI Wetlands
 - NWI Open Waters

- FEMA 100-Year Floodplain**
- Zone A
 - Zone AE

- Historic Resource / Boundary**
- State/Local NRHP Eligible
 - NRHP Listed
 - Park

- State/Local NRHP Eligible District
- NRHP Listed District

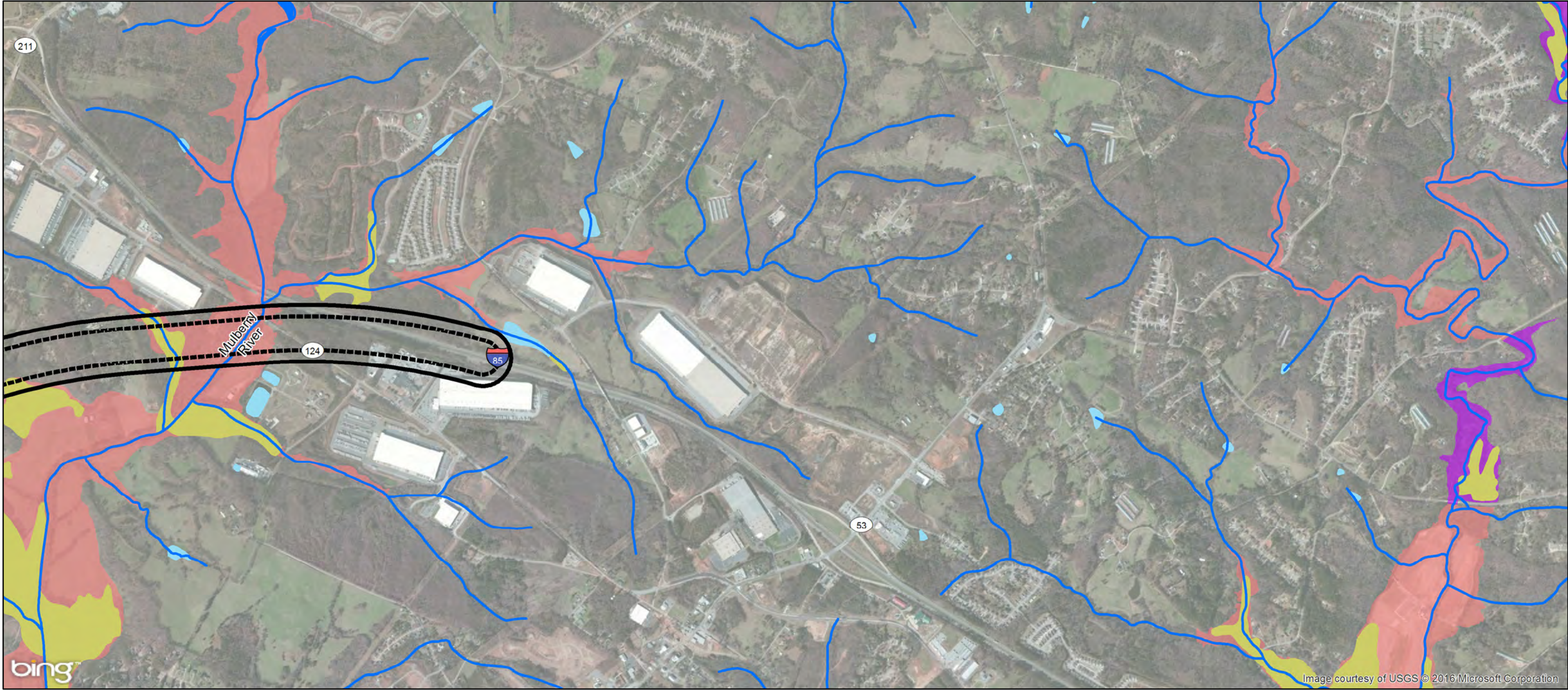




Legend

I-85 1000 ft Cultural Resources Environmental Screening Area	Waters	FEMA 100-Year Floodplain	Historic Resource / Boundary	State/Local NRHP Eligible District
I-85 600 ft Ecology Environmental Screening Area	NHD River / Stream	Zone A	State/Local NRHP Eligible	NRHP Listed District
Proposed Station	NWI Wetlands	Zone AE	NRHP Listed	
	NWI Open Waters		Park	

0 0.25 0.5 Miles



Legend

I-85 1000 ft Cultural Resources Environmental Screening Area	Waters	FEMA 100-Year Floodplain	Historic Resource / Boundary	State/Local NRHP Eligible District
I-85 600 ft Ecology Environmental Screening Area	NHD River / Stream	Zone A	State/Local NRHP Eligible	NRHP Listed District
Proposed Station	NWI Wetlands	Zone AE	NRHP Listed	
	NWI Open Waters		Park	

0 0.25 0.5
Miles